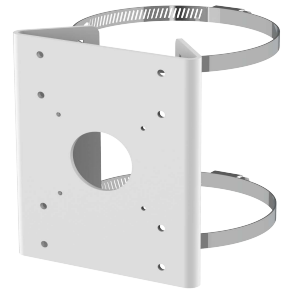


## Pole Mount Bracket



Use the R2-PLMT101 pole mount bracket to securely mount video surveillance cameras to poles or pendant or wall mounts.

### FEATURES

- DURABLE ALUMINUM ALLOY
- CLASSIC WHITE FINISH
- PART #: R2-PLMT101
- UPC: 840049305649

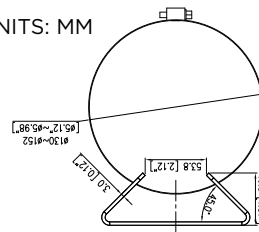
#### COMPATIBILITY

<b>CAPTURE ADVANCE MOUNTS</b>	R2-PNDMT402, R2-WMT501 R2-WMT502
-------------------------------	-------------------------------------

#### SPECIFICATIONS

<b>MATERIAL</b>	ALUMINUM ALLOY, STAINLESS STEEL
<b>DIMENSIONS</b>	5.13 × 1.81 × 6.69" (130.2 × 46 × 170MM)
<b>WEIGHT</b>	0.9 LB (0.41KG)
<b>EMBRACE HOOP DIAMETER</b>	5.12 ~ 5.98 "
<b>LOAD BEARING CAPACITY</b>	8.82 LB (4KG)
<b>OPERATING HUMIDITY</b>	0% - 90% RH

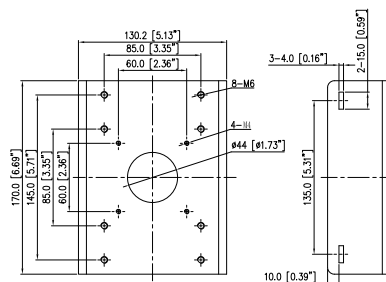
UNITS: MM



#### INSTALLATION NOTES

INSTALL ON POLE OR WITH PENDANT OR WALL MOUNT, SURFACE MUST BE CAPABLE OF SUPPORTING OVER THREE TIMES THE WEIGHT OF THE CAMERA AND MOUNT.

MAXIMUM LOAD BEARING CAPACITY OF POLE MOUNT IS 8.82 LB (4KG).



FOR MORE INFORMATION, CONTACT YOUR ADI SALES PERSON.